

# Hattah-Kulkyne National Park and Murray-Kulkyne Park

## Visitor Guide



Centred on an impressive lakes system, these adjoining parks offer the outdoor enthusiast an abundance of wildlife, majestic River Red Gums, ancient Buloke trees amid rolling sand plains, and the distinctive Mallee for which this region is renowned.



**Hattah-Kulkyne National Park** extends to the Murray River encompassing Fireman's, Jinkers and Ki Bend. Dogs are not permitted in these areas. Generators are not permitted in Ki Bend.

**Murray-Kulkyne Park** – Generators and dogs are permitted in these areas, but please keep your dog on a leash. Many riverside bush camp sites can be found in this park.

### Getting there

The Hattah-Kulkyne National Park is about 450km from Melbourne off the Calder Highway, between Ouyen and Mildura. It is 35km north of Ouyen and 74km south of Mildura. Murray-Kulkyne Park adjoins Hattah-Kulkyne National Park in the south-east.

### Things to see and do

#### Walking

There are a range of walks available throughout the park, from easy family walks to longer hikes.

#### Hattah Nature Walk – 1.2km, 40 minutes return

This gentle walk begins from the carpark near the park entrance off the Hattah-Robinvale Road. Interpretative signs highlight Mallee ecosystem.

#### Warepil Lookout Walk – 600m, 30 minutes return

Start from the Old Calder Highway carpark and take a short stroll up the steady incline to the lookout tower. You will be rewarded with great views of the surrounding Mallee Region. Look north-west and see the vast Murray Sunset National Park. This is a great place to witness the magnificent Mallee sunsets.

#### Woodlands Walk – 2.5km, 1 hour one way

This walk starts at the Hattah- Kulkyne National Park Visitor Centre carpark and connects to the Camel Pad Track. It allows you to walk the 8km to Lake Mournpall Campground avoiding the car traffic on Mournpall Track.

#### Mournpall Lake Loop – 9.5km, 3 hours circuit

Starting at the Lake Mournpall camping area, this loop walk follows the northern edge of Lake Mournpall before circling north around Lake Konardin passing through River Red Gum flood plains and Mallee dunes.

The walk showcases the dramatic changes in vegetation, as you get closer and further away from water. Keep an eye also for the

abundant wildlife. Kangaroos and emus can frequently be spotted, as well as a variety of birds, including wedge-tailed eagles, white-bellied sea eagles and whistling kites.

### Scenic drives

Most tracks in the park can be driven in 2WD vehicles, but some are sandy and may become slippery or impassable after rain. Check track conditions online, at the Visitor Centre or call 13 1963 before you leave.

The self-guided Hattah Lakes Nature Discovery Trail gives a great introduction to the park, while the Kulkyne Loop Drive provides a great overview of the park.

### Hattah Lakes Nature Discovery Trail

This pleasant 6.5km trail is designed as a short drive but can also be walked or explored on a pushbike.

As you travel around you will visit the homes of many animals, even though you may not see them. Even the logs and dead branches scattered on the ground provide important habitat and a link in the food chain for a wide range of insects, invertebrates, reptiles, birds and small ground-dwelling mammals.

### Canoeing

When water levels are suitable the lake system offers excellent opportunities for canoeing.

During flood times the water can extend many kilometres from the lakes.

### Camping

There are two designated campgrounds in the park with basic facilities, including non-flush toilets, fireplaces and picnic tables. They are at Lake Mournpall and Lake Hattah.

Advance bookings and payment are required year round for camping at these sights. Go to [parks.vic.gov.au/stay](https://parks.vic.gov.au/stay) or call 13 1963 to book your site.

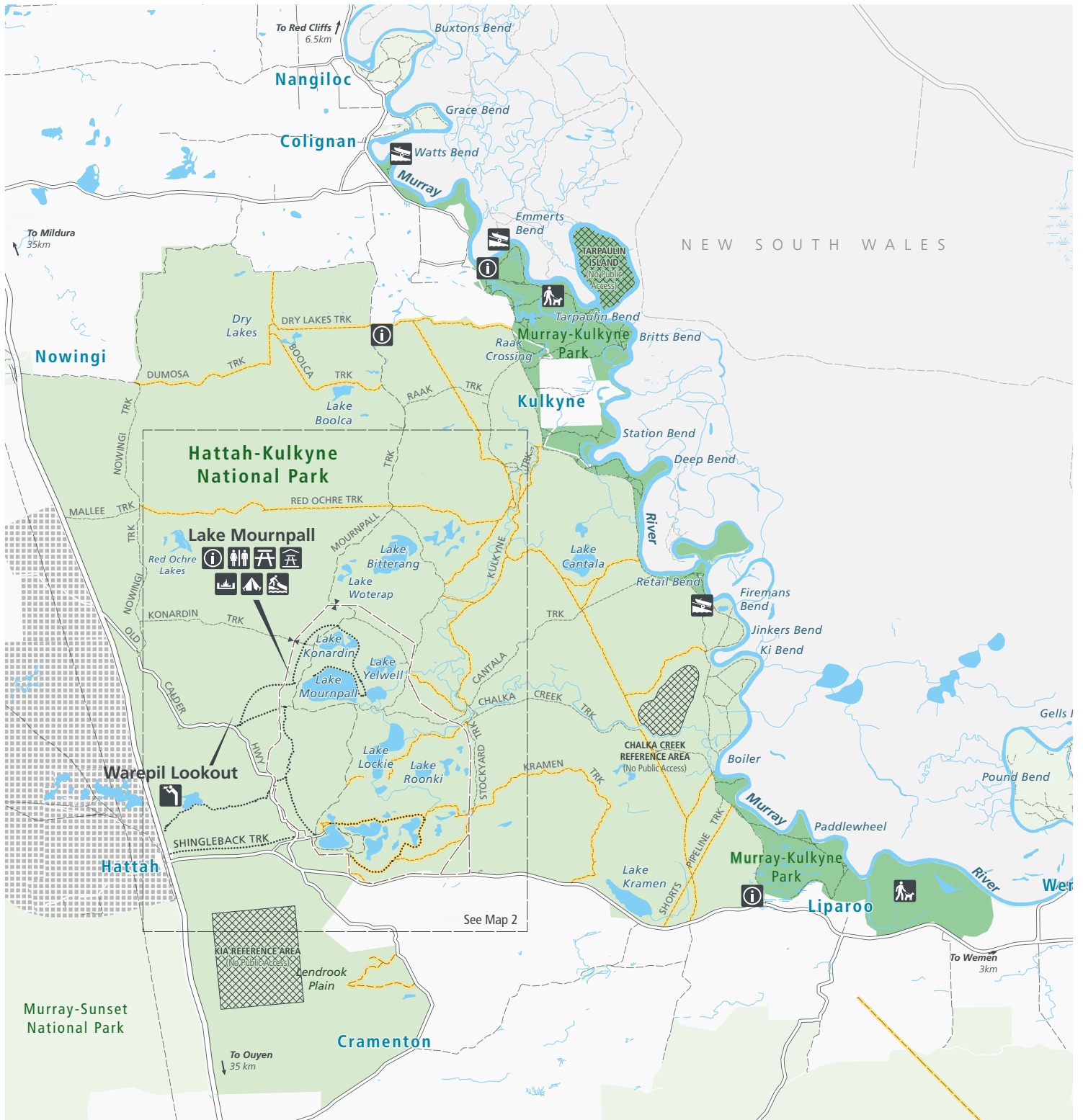
Other river camping areas without facilities are available at Ki Bend, Firemans Bend and Jinkers Bend. No booking or fees are required.

Please practise minimal impact camping and observe relevant fire regulations.

Beware of falling River Red Gum limbs when camping along the river. Trees and branches may fall at any time and swing away from the tree. Rope swings are not recommend.

# Hattah-Kulkyne National Park

Map 1

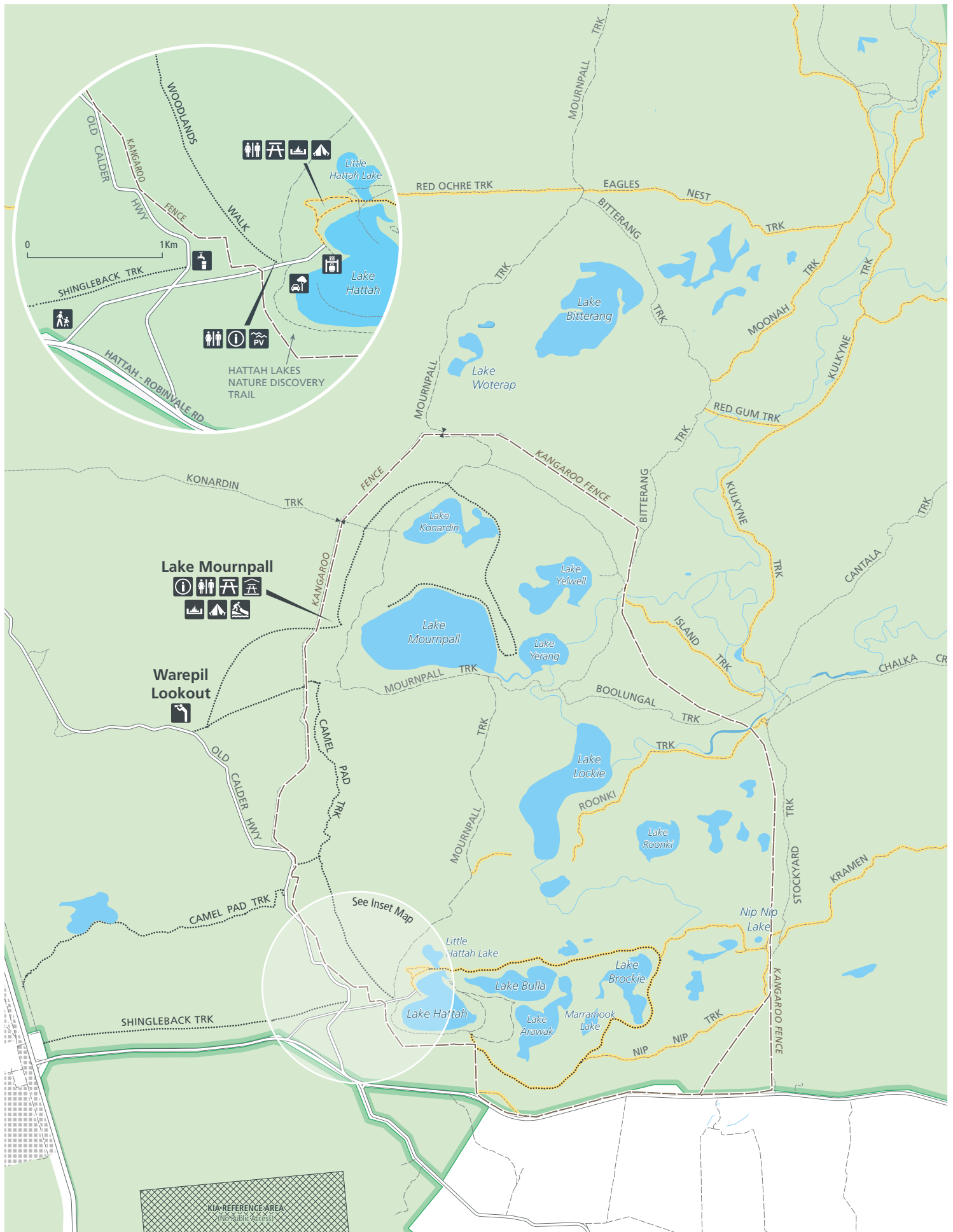


- |                |                        |                     |                              |
|----------------|------------------------|---------------------|------------------------------|
| Information    | Canoe launch           | Highway             | Hattah-Kulkyne National Park |
| Toilets        | Boat ramp              | Main road           | Murray-Kulkyne Park          |
| Sheltered area | Nature walk            | Sealed road         | Other park/reserve           |
| Picnic table   | Dogs on lead permitted | Unsealed road       | Public land                  |
| Gas barbecue   | Nature drive           | 4WD                 | Waterbody                    |
| Fireplace      | Camping area           | Walking track       | Wetland                      |
| Drinking water | Parks Victoria office  | Kangaroo Fence      | Reference Area               |
| Lookout        |                        | Mgmt. vehicles only |                              |



# Hattah-Kulkyne National Park

Map 2



## Birdwatching

The park has a rich variety of birdlife ranging from wetland species such as Pelicans, Ducks and Spoonbills to dry mallee specialists such as Malleefowl and Emu Wrens. The Hattah Lakes are part of Australia's significant wetlands, recognised under an international agreement (the Ramsar Convention) for the protection of wetlands. Download the *Birds of the Mallee Parks* factsheet from [parks.vic.gov.au](https://parks.vic.gov.au).

## Fishing

Murray Cod and Golden Perch (Yellowbelly) provide good sport for anglers. Unfortunately, European Carp are present in large numbers.

In season, Yabbies and Murray Crayfish may also be found in the creeks, lakes and rivers of the Murray.

A Victorian recreational fishing licence is required for fishing and yabbing in the lakes and creeks of the park and a NSW licence for the Murray River. These can be purchased from [service.vic.gov.au](https://service.vic.gov.au) and [service.nsw.gov.au](https://service.nsw.gov.au)

## Plants and wildlife

Hugging the lakes, river and creek margins are fine stands of graceful River Red Gums. They depend on floodwater to replenish and vitalise the creeks, billabongs and wetlands as the local rainfall is low. Black Box woodlands dominate further away from the lakes, preferring areas where flooding is less frequent. Slender Cypress Pine and Buloke occupy the rolling sand-plains. Mallee eucalypts flourish on the higher, dry, less fertile sand ridges.

More than 200 species of birds have been recorded, including the endangered mound-building Malleefowl. Other interesting birds include Blue-faced Honeyeaters, White-winged Choughs and Apostlebirds that fossick around the camping area (a bird list for the park is available).

Three species of kangaroos (Red, Western Grey and Eastern Grey) may be seen in the parks. Emus are common.

## Caring for the park

Help us look after your park by following these guidelines:

- Please take rubbish with you for recycling or disposal
- Camp only in designated campgrounds
- All native plants, animals, historical and archaeological sites and geographic features are protected by law
- Dogs are not permitted in Hattah-Kulkyne National Park. They are permitted in Murray Kulkyne Park but must be kept on leash.
- Firearms are prohibited
- Light fires only in fireplaces provided.
- Ensure fires are never left unattended and are completely out before you leave.
- Put out fires with water, not soil. When it's cool to touch, it's safe to leave.
- Collect only dead wood from the ground for campfires or use a portable camping stove instead.
- Please do not collect wood from inside the campground or inside the kangaroo proof fence.

## Be prepared and stay safe

For emergency assistance call Triple Zero (000). If there is a green emergency marker sign near you, read the information on the marker to the operator.

Hattah-Kulkyne National Park and Murray-Kulkyne Park are in the Mallee fire district. Bushfire safety is a personal responsibility. Anyone entering parks and forests during the bushfire season needs to stay aware of forecast weather conditions. Check the Fire Danger Rating and for days of Total Fire Ban at [emergency.vic.gov.au](https://emergency.vic.gov.au), download the VicEmergency smartphone app or call the VicEmergency Hotline on 1800 226 226. No fires may be lit on Total Fire Ban days.

On Catastrophic Fire Danger Rating days this park will be closed for public safety. If you are already in the Park, leave the night before or as early as possible in the morning. Warnings signs may be erected, but do not expect a personal warning. Check the latest conditions at [parks.vic.gov.au](https://parks.vic.gov.au) or by calling 13 1963.